

SUCTION STRAINERS

APPLICATIONS

ARBO suction strainers are primarily used to protect pumps against foreign particles. This can prevent serious damage of your pumps and will therefore reduce maintenance cost and process down time.

All ARBO strainers are all designed under consideration of the recommended maximum flow velocity for centrifugal pumps.

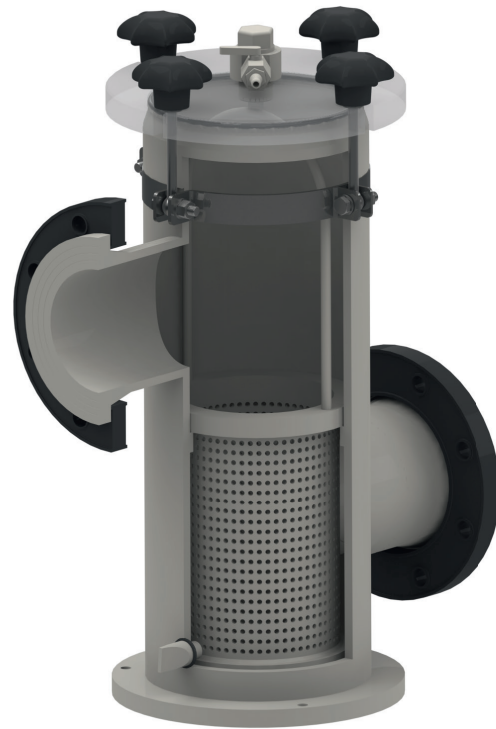
The pressure drop over the strainer basket is very low, therefore ARBO strainers are well suitable for processes with higher liquid temperatures and low NPSH situations.

We offer a wide range of standard units but produce custom build units as well.

For situations where a limited suction lift is required, this unit may be suitable as well. Please consult our sales department for a specific calculation and quote.

MATERIALS

Standard is the material PPH that covers a very wide range of duties. For highly corrosive mixtures at higher temperatures even a reservoir entirely made of PVDF may be offered. The standard priming unit has EPDM gaskets.

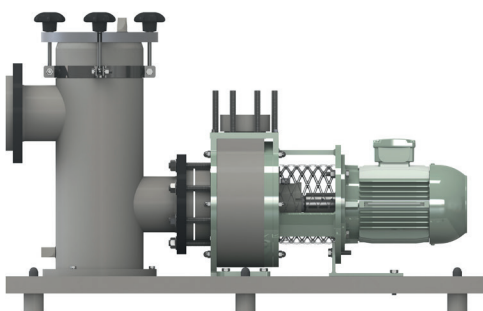


Max. operating pressure at 20°C: -0.8 to 2 Bar;
Recommended flow velocity in suction line: 1 m/s.

CONSTRUCTION			
MATERIALS	ABBREVIATION	T MIN. °C	T MAX. °C
Polypropylene	PP	0	80
Polyvinylidenfluoride	PVDF	-30	120

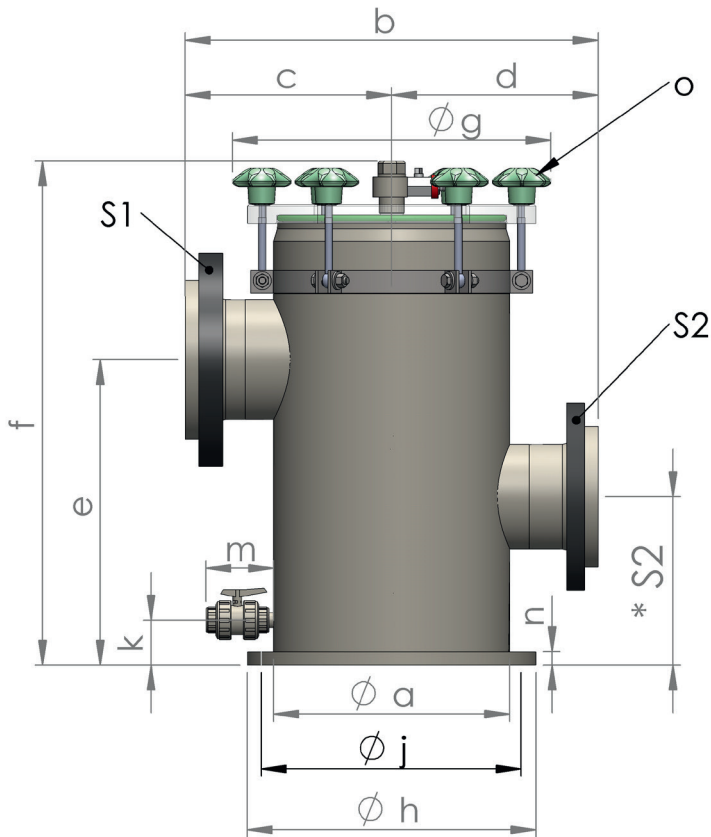
MATERIALS			
ELASTOMERS	ABBREVIATION	T MIN. °C	T MAX. °C
EPDM	E	-40	150
Viton	V	-25	220
Polytetrafluorethene	T	-190	260
CONNECTIONS		ABBREVIATION	
DIN2501 PN10 Flanges		F	

The system pressures mentioned, apply to the basic material only; the max. system pressure for your application can differentiate from this value. On doubt please contact our sales department.



DIMENSIONS / WEIGHTS

STANDARD STRAINERS



TYPE	M3/H	S1	S2	*S2		ALL DIMENSIONS IN MM													PRIMING
DN	MAX.	DN	DN	MIN.	MAX.	a	b	c	d	e	f	g	h	j	k	m	n	o	VOLUME L
40	6	40	40	80	230	225	470	235	235	343	569	337	285	3x09 PDC.262	60	145	18	4 x	9,3
50	10	50	50	90	220	225	470	235	235	343	569	337	285	3x09 PDC.262	60	145	18	4 x	9,1
65	20	65	65	100	215	225	470	235	235	343	569	337	285	3x09 PDC.262	60	145	18	4 x	8,9
80	30	80	80	105	210	225	470	235	235	353	589	337	285	3x09 PDC.262	60	145	18	4 x	8,9
100	40	100	100	115	200	225	470	235	235	353	589	337	285	3x09 PDC.262	60	145	18	4 x	8,6
125	60	125	125	115	200	225	470	235	235	408	668	337	285	3x09 PDC.262	60	145	18	4 x	8,6
150	90	150	150	150	200	315	551	258	258	408	668	427	385	6x09 PDC.355	60	145	18	6 x	18,8
200	160	200	200	200	600	400	760	380	380	784	1082	511	460	6x09 PDC.437	100	145	49	8 x	70,0

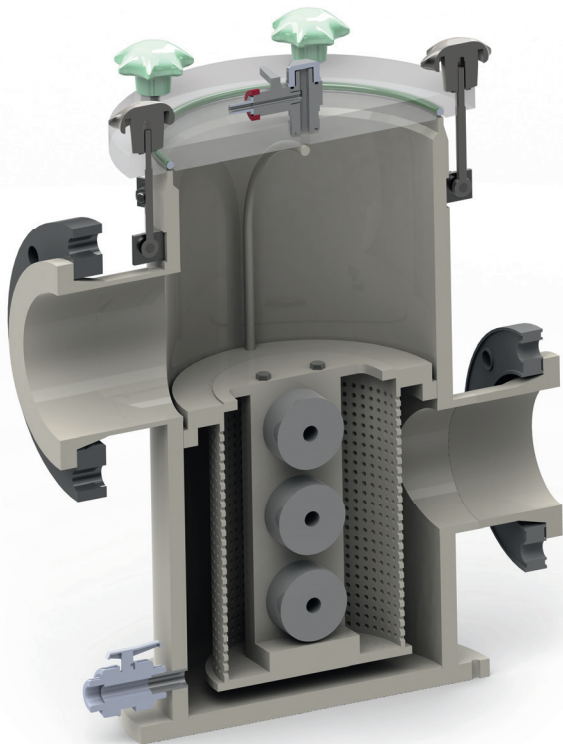
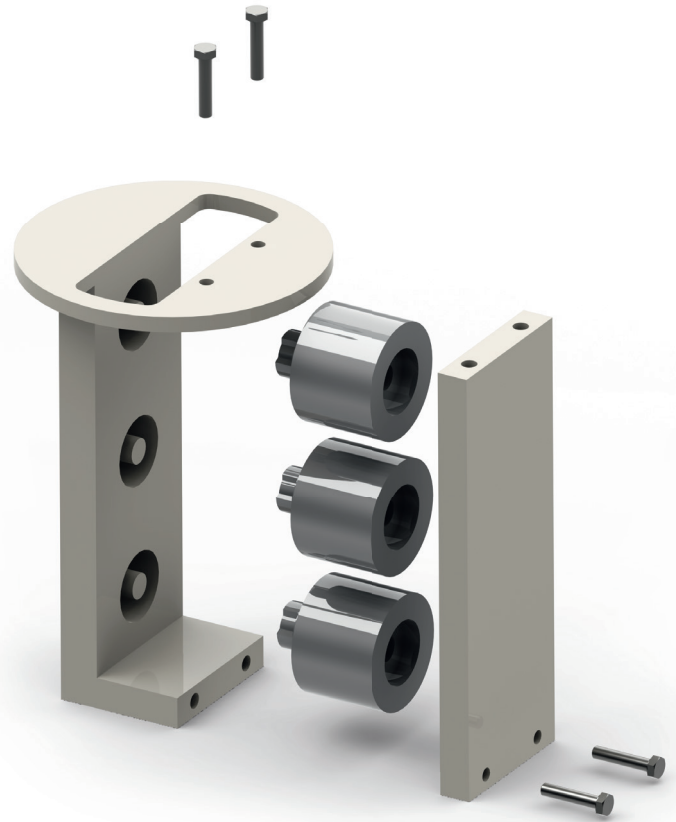
ORDERING CODE (P.I.C.)				
PRODUCT	S1 INLET	S2 OUTLET	MATERIAL WETTED PARTS	GASKETS
Strainer	Dn40	Dn40	PP	E
	Dn50	Dn50	PVDF	V
	Dn65	Dn65		T
	Dn80	Dn80		
	Dn100	Dn100		
	Dn125	Dn125		
	Dn150	Dn150		
	Dn200	Dn200		

4.4. SUCTION STRAINERS WITH MAGNETS

THE IRON CATCHER!

- optional available with magnetic inserts
- excellent to protect your
 - magnetic drive pump impellers and bearings
 - mechanical seal
- easy to dismantle and clean
- absolutely corrosion resistant!

Please advise most accurate data in order to give you the best advise! Order strainer basket separately and specify perforation 5mm or 2mm and with or without magnetic insert.



DATA FOR PRIMING UNIT CALCULATION		
1	Flow rate	m ³ /h
2	Suction pipe bore	Dn mm
3	Suction lift required	m
4	Suction pipe total	m
5	Liquid density	kg/m ³
6	Height dimension*	S2 mm