

PRIUS P MF 50 Hz 1-PHASE

Multifunction electronic control

MOTORS

0,18 kW: 3-phase 230 V 1350 rpm

0,37 kW: 3-phase 230 V 1370 rpm

PRIUS P MF with SINGLE-PHASE supply has: 10 working modes (constant, ppm, %, mlq, pause-work, weekly, pulse, mA, Volt and Batch), level control, alarms, stand-by, double position of the electronic unit (standard or rotated mounting), **ceramic or SS plunger**, aluminium enclosure, flow regulation and double ball check valve.

Multifunction motor pump PRIUS P MF SINGLE-PHASE brings, moreover, a unique level of management thanks to LCD display and encoder electronic controller that ensure the highest accuracy in dosage setting.

OPTIONS: MODBUS, IP65 Motor.

SS PUMP HEAD AND PLUNGER



PP PUMP HEAD AND CERAMIC PLUNGER



WITH PP PUMP HEAD AND CERAMIC PLUNGER
 WITH SS PUMP HEAD AND PLUNGER

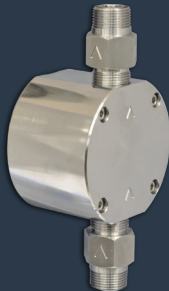
FEATURES

- Multifunction plunger pump with inverter
- Working mode: Constant, ppm, %, mlq, pause-work, weekly, mA, Volt and Batch
- Level control
- Alarms
- Stand-by
- Double position of the electronic unit (default or alternative gear box position)
- Ceramic plunger / Stainless steel (AISI316) plunger
- Aluminium enclosure
- Stroke adjustment
- Double ball check valve

PUMP HEADS



PP

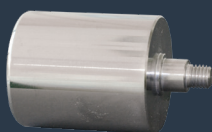


AISI 316L

PLUNGERS



CERAMIC
(SIALOX96)



AISI 420

LENGTH	PLUNGER	50Hz	SPM	Pressure		Capacity		Motor	HOSES CONNECTION	
				bar	psi	l/h	gph		PP	SS
14	010024	175	10	145	24	6,3	0,37 kW	G1/2" 12x18	R1/2"	
	010013	94			13	3,4				
	010010	70			10	2,6				
	010005	35			5	1,3				
25	010080	175	10	145	80	21,1	0,37 kW	G1/2" 12x18	R1/2"	
	010043	94			43	11,4				
	010032	70			32	8,5				
	010016	35			16	4,2				
15 mm 32	010130	175	10	145	130	34,3	0,37 kW	G1/2" 12x18	R1/2"	
	010070	94			70	18,5				
	010052	70			52	13,7				
	010026	35			26	6,9				
40	010210	175	10	145	210	55,5	0,37 kW	G3/4" i.d. 18 mm	R3/4"	
	010113	94			113	29,8				
	010084	70			84	22,2				
	010042	35			42	11,1				
50	010320	175	10	145	320	84,5	0,37 kW	G3/4" i.d. 18 mm	R3/4"	
	010172	94			172	45,4				
	010128	70			128	33,8				
	010064	35			64	16,9				