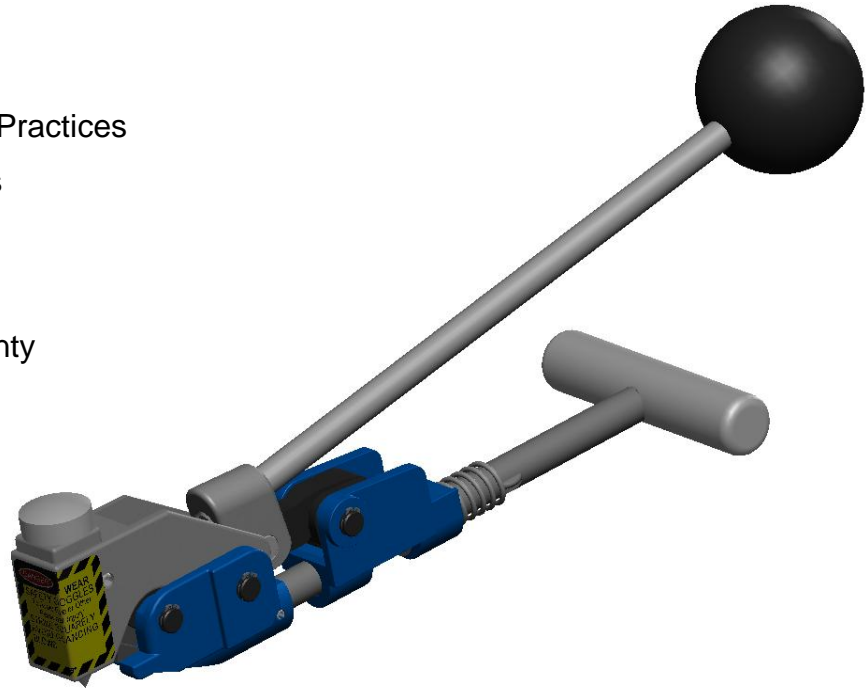


### Introduction:

The T30069 Center Punch Tool installs BAND-IT 3/8" and 5/8", 201 Stainless Steel and Galvanized Carbon Steel clamps.

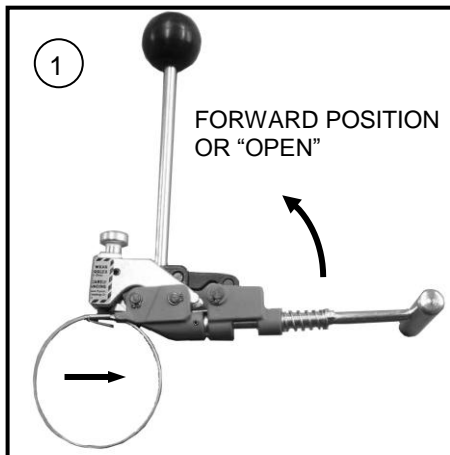
### Table of Contents:

1. Introduction & Safety Practices
2. Operating Instructions
3. Tool Assembly
4. Repair Parts List
5. 3/8" Adapter & Warranty



### Safety Practices:

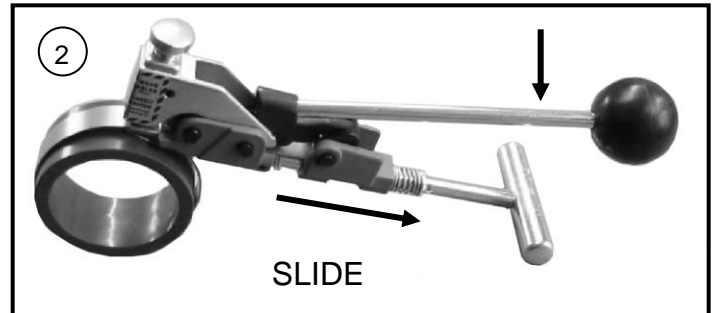
1. Read this manual and become familiar with the tool before use.
2. Protective eyewear should be worn during use.
3. Wear appropriate gloves for handling steel.
4. When applying clamps, care should be taken to insure fingers are not in contact with the clamp during installation.
5. Never attempt to clamp objects which have the potential to burst, shatter or otherwise cause bodily harm.
6. Do not use tool on live electrical sources.



### LOAD CLAMP

Push tension handle all the way forward. Insert BAND-IT Center Punch clamp tail and push all the way into tool.

**Tool Tip:** To apply 3/8" wide clamps, use S03289 adapter kit. See attached instructions for 3/8" adapter.

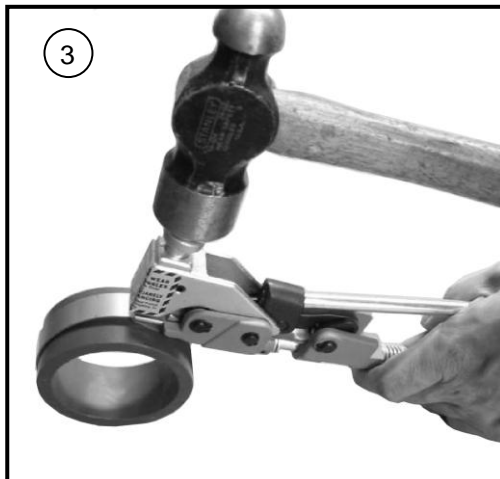


### TIGHTEN CLAMP

Tighten the clamp with short downward strokes. Tension handle should be in down position at completion of tightening clamp.

*Note: Do not lift tension handle too high as it may open up buckle pusher, resulting in improper clamp application.*

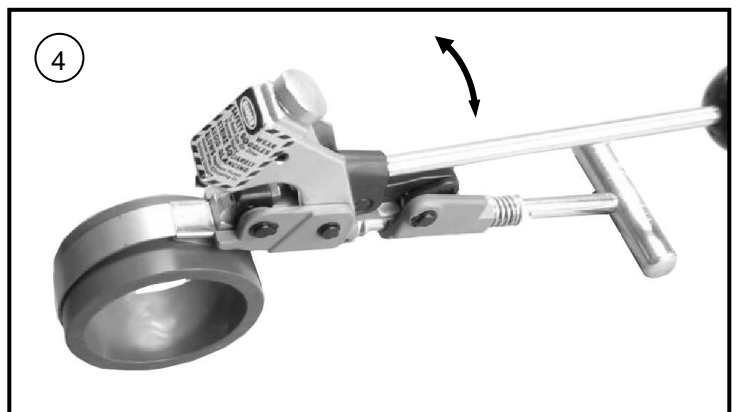
If clamp tension needs to be released before locking, move handle forward and move slide back against spring. This raises pulling dog and releases clamp tension.



### LOCK CLAMP

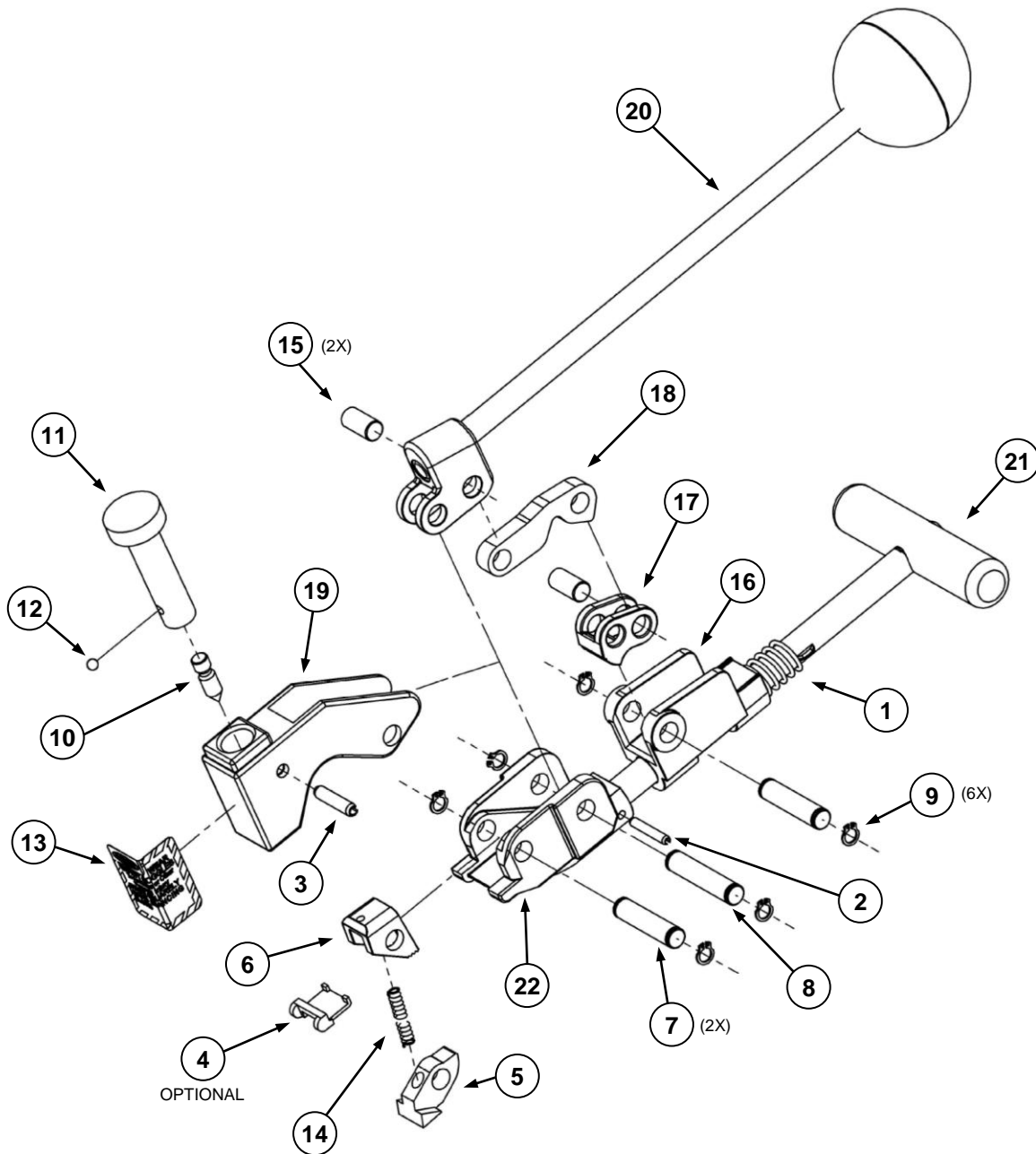
Holding tension handle down, lock clamp by hitting punch at least twice with 2 lb. Mallet.

**Note:** Only use genuine BAND-IT Center Punch clamps. Disregarding this may result in substandard clamps or tool failure. BAND-IT CP clamps are made out of Type 201 Stainless Steel or Galvanized Carbon Steel material with a stainless steel buckle for added strength.



### REMOVE CLAMP TAIL

Hold work-piece and pivot the tool back and forth to break off clamp tail. Remove tail from tool by operating tension handle. When tail has moved through holding dog, raise tension handle and pull tail free.



## **INSTRUCTIONS:** **DISSASSEMBLY AND ASSEMBLY OF PUNCH**

To replace the punch (10), remove the head spring pin (3). Rotate the punch holder (11) until the retaining ball (12) is visible on the inside of the head (19). Remove the retaining ball and pull the punch out. Replace the punch and reassemble in reversed manner.



## REPAIR PARTS LIST FOR T300

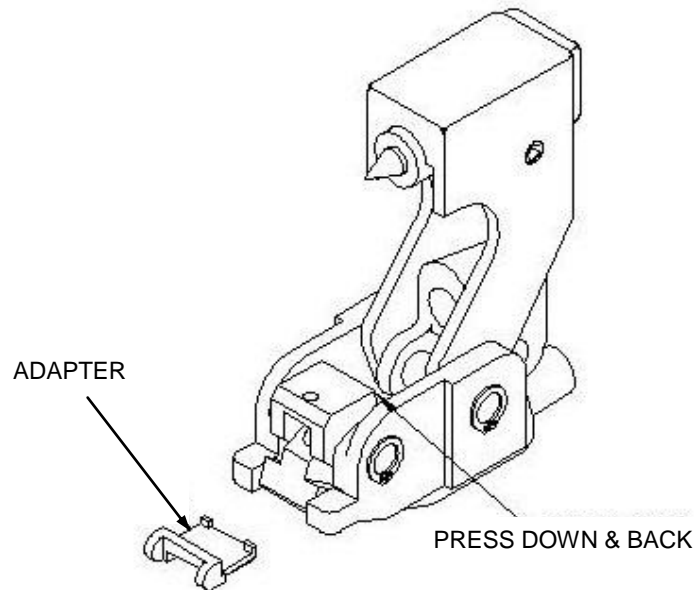
NO.	PART NUMBER	DESCRIPTION
1	A04987	COMPRESSION SPRING, 5/8" DIA.
2	C09787	SPRING PIN, 1/8" DIA.
3	J64287	HEAD SPRING PIN
4	S03289	ADAPTER INSERT TO INSTALL 3/8" WIDE CENTER PUNCH CLAMPS (OPTIONAL)
5	S05777	BUCKLE PUSHER
6	S05887	HOLDING DOG
7	S06887	PIN, PULLING/HOLDING DOG
8	S06987	PIN, HEAD PIVOT
9	S08387	RETAINING RING, 5/16" DIA.
10	S19087	PUNCH
11	T25287	PUNCH HOLDER
12	T25587	RETAINING BALL, 5/32" DIA.
13	T25987	DECAL, DANGER
14	T26487	SPRING, HOLDING DOG
15	T26787	DOWEL PIN, 5/16" DIA.
16	T27040	SLIDE
17	T27187	PULLING DOG
18	T27288	LINK
19	T27488	HEAD
20	T27988	TENSION HANDLE ASSEMBLY
21	T28687	SLIDE BAR AND TENSION HANDLE ASSEMBLY
22	T28740	NOSE
-	T28088	HEAD ASSEMBLY INCLUDES: HEAD SPRING PIN, DANGER DECAL, HEAD, PUNCH, RETAINING BALL, AND PUNCH HOLDER
-	T28888	NOSE AND SLIDE ASSEMBLY INCLUDES: NOSE, SLIDE, COMPRESSION SPRING, HEAD SPRING PIN, AND SLIDE BAR AND TENSION HANDLE
-	T32190	PUNCH KIT INCLUDES: PUNCH, PUNCH HOLDER AND RETAINING BALL
-	T32290	GRIPPER KIT INCLUDES: PULLING DOG, COMPRESSION SPRING X 2, RETAINING RING X 3 AND HOLDING DOG

# 3/8" Adapter & Warranty



## T30069 CP Hand Tool

1. To convert T300 center punch tool, rotate head back to expose buckle pusher and nose of tool.
2. Press down on the lobe at the rear of the buckle pusher to raise the front portion for insertion of adapter between the buckle pusher and the nose.
3. Seat the adapter against the buckle pusher with the post of the adapter hooked at the rear of the triangle shapes of the buckle pusher. Release the pressure on the buckle pusher lobe to secure the adapter into place. Rotate the head forward. The tool is now ready to use.
4. Repeat instructions 1 and 2 to remove adapter.



### Warranty:

For Warranty information, visit the following URL

[www.BAND-IT-IDEX.com/Warranty.html](http://www.BAND-IT-IDEX.com/Warranty.html)