



- 1 Double-lip sealing system
- 2 Standard strip insert
- 3 Lock bars
- 4 Protection ring

**NEW!**  
Now also available with FKM sealing sleeve

**NORMACONNECT®**

**NEW**

## The protective pipe coupling

NORMACONNECT® FLEX /FLEX E are axial non-restraint couplings. They are used for connecting metal pipes, stainless pipes, as well as concrete and plastic pipes. Sealing reliability is ensured even when NORMACONNECT® FLEX /FLEX E pipe couplings are mounted on pipes with or without a gap and also on compensated pipes.



### Advantages at a glance

- Compensates for thermal elongation of the pipes
- Joining all kind of pipe materials is possible, e.g., for steel, plastic, cast iron, etc.

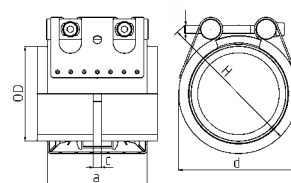
### Information

- Sizes: 26.9 mm - 1219.1 mm
- Working pressure: 70.0 - 4.0 bar
- Material: AISI 304, AISI 316 Ti
- EPDM:  
 Sizes from 26.9 mm up to 168.3 mm: - 30 °C up to + 125 °C  
 Sizes > 180.0 mm: - 20 °C up to + 80 °C
- NBR: from - 20 °C up to + 80 °C
- FKM: -10 °C to + 150 °C (Higher temperatures possible in some cases.)

### Materials



W1	W2	W3	W4	W5
	x		x	x

### Technical data & Ordering information



## Technical data & Ordering information

### NORMACONNECT® FGR FLEX

Ø (O.D.)	Designation	Clamping ranges	PN <sup>1</sup> (MAWP <sup>1</sup> from diameter 180)	WP <sup>2</sup>	C max	Dimensions (approx.)			Weight (approx.)	Hex socket locking bolts	
		Odmin - Odmax	 [bar]	 [bar]	(mm)	a (mm)	d (mm)	H (mm)	(kg/pc.)	Thread	Tightening torque (Nm)
26.9	FLEX 26.9	26.4 - 27.5	16	70	3	67	50	70	0.39	M 8 SW 6	5
28.0	FLEX 28.0	27.5 - 28.5	16	70	3	67	50	70	0.39	M 8 SW 6	5
30.0	FLEX 30.0	29.5 - 30.6	16	70	3	67	50	70	0.39	M 8 SW 6	5
33.7	FLEX 33.7	33.0 - 34.3	16	60	3	67	55	75	0.4	M 8 SW 6	5
35.0	FLEX 35.0	34.5 - 35.6	16	60	8	63	55	75	0.54	M 8 SW 6	5
38.0	FLEX 38.0	37.5 - 38.6	16	60	8	63	60	80	0.54	M 8 SW 6	5
42.4	FLEX 42.4	41.7 - 43.0	16	50	8	63	65	85	0.56	M 8 SW 6	5
44.5	FLEX 44.5	44.0 - 45.1	16	50	8	63	65	85	0.56	M 8 SW 6	5
48.3	FLEX 48.3	47.6 - 50.5	16	50	8	63	70	90	0.58	M 8 SW 6	5
54.0	FLEX 54.0	53.3 - 54.6	16	50	17	78	75	95	0.76	M 8 SW 6	10
57.0	FLEX 57.0	56.3 - 57.7	16	50	17	78	80	100	0.76	M 8 SW 6	10
60.3	FLEX 60.3	59.5 - 61.0	16	40	17	78	85	105	0.77	M 8 SW 6	10
63.0	FLEX 63.0	62.2 - 63.9	16	40	17	78	85	105	0.77	M 8 SW 6	10
70.0	FLEX 70.0	69.0 - 71.0	16	40	25	98	90	110	1.37	M 8 SW 6	10
73.0	FLEX 73.0	72.1 - 73.8	16	40	25	98	95	115	1.39	M 8 SW 6	10
76.1	FLEX 76.1	75.2 - 77.0	16	35	25	98	100	120	1.39	M 8 SW 6	10
80.0	FLEX 80.0	79.0 - 80.8	16	35	25	98	100	120	1.43	M 8 SW 6	10
84.0	FLEX 84.0	83.0 - 85.0	16	35	25	98	105	125	1.46	M 8 SW 6	10
88.9	FLEX 88.9	87.0 - 89.9	16	35	25	98	110	130	1.47	M 8 SW 6	10
101.6	FLEX 101.6	100.4 - 102.8	16	35	25	98	125	145	1.61	M 8 SW 6	10
104.0	FLEX 104.0	102.8 - 106.1	16	35	25	98	125	145	1.62	M 8 SW 6	10
108.0	FLEX 108.0	106.8 - 109.2	16	35	25	98	130	150	1.64	M 8 SW 6	10
110.0	FLEX 110.0	108.8 - 111.4	16	35	25	98	130	150	1.69	M 8 SW 6	10
114.3	FLEX 114.3	113.0 - 115.5	16	35	25	98	135	155	1.69	M 8 SW 6	15
129.0	FLEX 129.0	127.6 - 131.1	16	32	35	113	155	185	2.41	M 10 SW 8	20
133.0	FLEX 133.0	131.5 - 134.4	16	32	35	113	160	190	2.43	M 10 SW 8	20
139.7	FLEX 139.7	138.1 - 141.6	16	32	35	113	165	195	2.5	M 10 SW 8	25
141.3	FLEX 141.3	139.6 - 142.8	16	32	35	113	170	200	2.5	M 10 SW 8	25
154.0	FLEX 154.0	152.3 - 156.1	16	32	35	113	180	210	2.62	M 10 SW 8	30
159.0	FLEX 159.0	157.3 - 160.7	16	32	35	113	185	215	2.69	M 10 SW 8	30
168.3	FLEX 168.3	166.5 - 170.1	16	32	35	113	195	225	2.75	M 10 SW 8	30
180.0	FLEX 180.0	178.0 - 182.0	23.5	50.0	35	141	210	240	5.4	M 12 SW 10	35
193.7	FLEX 193.7	192.0 - 196.0	23.5	46.0	35	141	225	255	5.6	M 12 SW 10	35
206.0	FLEX 206.0	202.0 - 208.0	20.0	43.0	35	141	240	270	5.8	M 12 SW 10	35
219.0	FLEX 219.0	216.0 - 221.0	18.0	40.5	35	141	250	280	6.0	M 12 SW 10	35
225.0	FLEX 225.0	222.0 - 227.0	18.0	40.0	35	141	255	285	6.1	M 12 SW 10	35
229.9	FLEX 229.9	228.0 - 232.0	18.0	39.0	35	141	260	290	6.2	M 12 SW 10	35
244.5	FLEX 244.5	242.0 - 247.0	18.0	37.0	35	141	275	305	6.4	M 12 SW 10	35
254.0	FLEX 254.0	250.0 - 256.0	18.0	35.5	35	141	285	315	6.5	M 12 SW 10	35
267.0	FLEX 267.0	264.0 - 269.0	18.0	33.5	35	141	300	330	6.7	M 12 SW 10	35
273.0	FLEX 273.0	270.0 - 275.0	17.0	33.0	35	141	305	335	6.8	M 12 SW 10	35
306.0	FLEX 306.0	302.0 - 308.0	15.0	29.0	35	141	340	370	7.4	M 12 SW 10	35
323.9	FLEX 323.9	320.0 - 327.0	15.0	28.0	35	141	355	385	7.6	M 12 SW 10	35
326.0	FLEX 326.0	322.0 - 329.0	13.0	27.5	35	141	360	390	7.7	M 12 SW 10	35
355.6	FLEX 355.6	352.0 - 359.0	13.0	25.0	35	141	390	420	8.1	M 12 SW 10	35
406.4	FLEX 406.4	402.0 - 410.0	10.0	22.0	35	141	440	470	8.9	M 12 SW 10	35
429.0	FLEX 429.0	426.0 - 431.0	7.5	21.0	35	141	460	490	9.3	M 12 SW 10	40
442.0	FLEX 442.0	439.0 - 444.0	7.5	20.0	35	141	475	505	9.5	M 12 SW 10	40
457.2	FLEX 457.2	454.0 - 459.0	7.5	19.5	35	141	490	520	9.7	M 12 SW 10	40
508.0	FLEX 508.0	505.0 - 510.0	7.5	17.0	35	141	540	570	10.5	M 12 SW 10	40
531.0	FLEX 531.0	528.0 - 534.0	7.5	16.0	35	141	565	595	10.9	M 12 SW 10	50
558.8	FLEX 558.8	556.0 - 562.0	7.5	15.5	35	141	590	620	11.3	M 12 SW 10	50
609.6	FLEX 609.6	606.0 - 613.0	6.0	14.0	35	141	640	670	12.1	M 12 SW 10	50
634.0	FLEX 634.0	631.0 - 637.0	5.0	13.5	35	141	665	695	12.5	M 12 SW 10	50
711.2	FLEX 711.2	707.0 - 715.0	5.0	12.0	35	141	745	775	13.7	M 12 SW 10	50
762.0	FLEX 762.0	758.0 - 766.0	4.5	11.0	35	141	795	885	14.5	M 12 SW 10	50
812.8	FLEX 812.8	808.0 - 817.0	4.5	10.5	35	141	845	935	17.2	M 12 SW 10	50
914.4	FLEX 914.4	909.0 - 919.0	3.3	9.5	35	141	945	1035	18.8	M 12 SW 10	60
1016.0	FLEX 1016.0	1013.0 - 1019.0	3.3	8.0	35	141	1050	1140	20.4	M 12 SW 10	60
1117.5	FLEX 1117.5	1114.0 - 1120.0	3.3	7.5	35	141	1150	1240	22.0	M 12 SW 10	60
1219.2	FLEX 1219.2	1216.0 - 1222.0	3.3	7.0	35	141	1250	1340	23.6	M 12 SW 10	60

Coupling sizes >800 mm are in 2-parts design! Sizes > 1219.2 on request

PN<sup>1</sup> (Nominal Pressure) is the max. admissible working pressure in shipbuilding, based on a safety factor of ≥ 4.

MAWP<sup>1</sup> (Maximum Allowable Working Pressure) is the max. admissible working pressure in shipbuilding, based on a safety factor of ≥ 4.

WP<sup>2</sup> is the max. working pressure in industrial applications, with a safety factor as per NORMA specification.

## Technical data & Ordering information

NORMACONNECT® FGR FLEX								
Ø (O.D.)	Designation	W2 Product No.		W4 Product No.		W5 Product No.		
		EPDM	NBR	EPDM	NBR	EPDM	NBR	FKM
26.9	FLEX 26.9	0573 9100 026	0573 8400 026	0573 9200 026	0573 8500 026			
28.0	FLEX 28.0	0573 9100 028	0573 8400 028	0573 9200 028	0573 8500 028			
30.0	FLEX 30.0	0573 9100 030	0573 8400 030	0573 9200 030	0573 8500 030			
33.7	FLEX 33.7	0573 9100 033	0573 8400 033	0573 9200 033	0573 8500 033			0573 9900 033
35.0	FLEX 35.0	0573 9100 035	0573 8400 035	0573 9200 035	0573 8500 035			
38.0	FLEX 38.0	0573 9100 038	0573 8400 038	0573 9200 038	0573 8500 038			0573 9900 038
42.4	FLEX 42.4	0573 9100 042	0573 8400 042	0573 9200 042	0573 8500 042			0573 9900 042
44.5	FLEX 44.5	0573 9100 044	0573 8400 044	0573 9200 044	0573 8500 044			
48.3	FLEX 48.3	0573 9100 048	0573 8400 048	0573 9200 048	0573 8500 048			0573 9900 048
54.0	FLEX 54.0	0573 9100 054	0573 8400 054	0573 9200 054	0573 8500 054			
57.0	FLEX 57.0	0573 9100 057	0573 8400 057	0573 9200 057	0573 8500 057			0573 9900 057
60.3	FLEX 60.3	0573 9100 060	0573 8400 060	0573 9200 060	0573 8500 060			0573 9900 060
63.0	FLEX 63.0	0573 9100 063	0573 8400 063	0573 9200 063	0573 8500 063			0573 9900 063
70.0	FLEX 70.0	0573 9100 070	0573 8400 070	0573 9200 070	0573 8500 070			
73.0	FLEX 73.0	0573 9100 073	0573 8400 073	0573 9200 073	0573 8500 073			
76.1	FLEX 76.1	0573 9100 076	0573 8400 076	0573 9200 076	0573 8500 076			0573 9900 076
80.0	FLEX 80.0	0573 9100 080	0573 8400 080	0573 9200 080	0573 8500 080			
84.0	FLEX 84.0	0573 9100 084	0573 8400 084	0573 9200 084	0573 8500 084			
88.9	FLEX 88.9	0573 9100 088	0573 8400 088	0573 9200 088	0573 8500 088			0573 9900 088
101.6	FLEX 101.6	0573 9100 101	0573 8400 101	0573 9200 101	0573 8500 101			
104.0	FLEX 104.0	0573 9100 104	0573 8400 104	0573 9200 104	0573 8500 104			
108.0	FLEX 108.0	0573 9100 108	0573 8400 108	0573 9200 108	0573 8500 108			
110.0	FLEX 110.0	0573 9100 110	0573 8400 110	0573 9200 110	0573 8500 110			
114.3	FLEX 114.3	0573 9100 114	0573 8400 114	0573 9200 114	0573 8500 114			0573 9900 114
129.0	FLEX 129.0	0573 9100 129	0573 8400 129	0573 9200 129	0573 8500 129			0573 9900 129
133.0	FLEX 133.0	0573 9100 133	0573 8400 133	0573 9200 133	0573 8500 133			
139.7	FLEX 139.7	0573 9100 139	0573 8400 139	0573 9200 139	0573 8500 139			0573 9900 139
141.3	FLEX 141.3	0573 9100 141	0573 8400 141	0573 9200 141	0573 8500 141			
154.0	FLEX 154.0	0573 9100 154	0573 8400 154	0573 9200 154	0573 8500 154			
159.0	FLEX 159.0	0573 9100 159	0573 8400 159	0573 9200 159	0573 8500 159			
168.3	FLEX 168.3	0573 9100 168	0573 8400 168	0573 9200 168	0573 8500 168			0573 9900 168
180.0	FLEX 180.0	0575 8140 ...	0575 8440 ...	0575 8240 ...	0575 8540 ...	0575 8340 ...	0575 8640 ...	
193.7	FLEX 193.7	0575 8140 ...	0575 8440 ...	0575 8240 ...	0575 8540 ...	0575 8340 ...	0575 8640 ...	
206.0	FLEX 206.0	0575 8140 ...	0575 8440 ...	0575 8240 ...	0575 8540 ...	0575 8340 ...	0575 8640 ...	
219.0	FLEX 219.0	0575 8140 ...	0575 8440 ...	0575 8240 ...	0575 8540 ...	0575 8340 ...	0575 8640 ...	
225.0	FLEX 225.0	0575 8140 ...	0575 8440 ...	0575 8240 ...	0575 8540 ...	0575 8340 ...	0575 8640 ...	
229.9	FLEX 229.9	0575 8140 ...	0575 8440 ...	0575 8240 ...	0575 8540 ...	0575 8340 ...	0575 8640 ...	
244.5	FLEX 244.5	0575 8140 ...	0575 8440 ...	0575 8240 ...	0575 8540 ...	0575 8340 ...	0575 8640 ...	
254.0	FLEX 254.0	0575 8140 ...	0575 8440 ...	0575 8240 ...	0575 8540 ...	0575 8340 ...	0575 8640 ...	
267.0	FLEX 267.0	0575 8140 ...	0575 8440 ...	0575 8240 ...	0575 8540 ...	0575 8340 ...	0575 8640 ...	
273.0	FLEX 273.0	0575 8140 ...	0575 8440 ...	0575 8240 ...	0575 8540 ...	0575 8340 ...	0575 8640 ...	
306.0	FLEX 306.0	0575 8140 ...	0575 8440 ...	0575 8240 ...	0575 8540 ...	0575 8340 ...	0575 8640 ...	
323.9	FLEX 323.9	0575 8140 ...	0575 8440 ...	0575 8240 ...	0575 8540 ...	0575 8340 ...	0575 8640 ...	
326.0	FLEX 326.0	0575 8140 ...	0575 8440 ...	0575 8240 ...	0575 8540 ...	0575 8340 ...	0575 8640 ...	
355.6	FLEX 355.6	0575 8140 ...	0575 8440 ...	0575 8240 ...	0575 8540 ...	0575 8340 ...	0575 8640 ...	
406.4	FLEX 406.4	0575 8140 ...	0575 8440 ...	0575 8240 ...	0575 8540 ...	0575 8340 ...	0575 8640 ...	
429.0	FLEX 429.0	0575 8140 ...	0575 8440 ...	0575 8240 ...	0575 8540 ...	0575 8340 ...	0575 8640 ...	
442.0	FLEX 442.0	0575 8140 ...	0575 8440 ...	0575 8240 ...	0575 8540 ...	0575 8340 ...	0575 8640 ...	
457.2	FLEX 457.2	0575 8140 ...	0575 8440 ...	0575 8240 ...	0575 8540 ...	0575 8340 ...	0575 8640 ...	
508.0	FLEX 508.0	0575 8140 ...	0575 8440 ...	0575 8240 ...	0575 8540 ...	0575 8340 ...	0575 8640 ...	
531.0	FLEX 531.0	0575 8140 ...	0575 8440 ...	0575 8240 ...	0575 8540 ...	0575 8340 ...	0575 8640 ...	
558.8	FLEX 558.8	0575 8140 ...	0575 8440 ...	0575 8240 ...	0575 8540 ...	0575 8340 ...	0575 8640 ...	
609.6	FLEX 609.6	0575 8140 ...	0575 8440 ...	0575 8240 ...	0575 8540 ...	0575 8340 ...	0575 8640 ...	
634.0	FLEX 634.0	0575 8140 ...	0575 8440 ...	0575 8240 ...	0575 8540 ...	0575 8340 ...	0575 8640 ...	
711.2	FLEX 711.2	0575 8140 ...	0575 8440 ...	0575 8240 ...	0575 8540 ...	0575 8340 ...	0575 8640 ...	
762.0	FLEX 762.0	0575 8140 ...	0575 8440 ...	0575 8240 ...	0575 8540 ...	0575 8340 ...	0575 8640 ...	
812.8	FLEX 812.8	0575 8148 ...	0575 8448 ...	0575 8248 ...	0575 8548 ...	0575 8348 ...	0575 8648 ...	
914.4	FLEX 914.4	0575 8148 ...	0575 8448 ...	0575 8248 ...	0575 8548 ...	0575 8348 ...	0575 8648 ...	
1016.0	FLEX 1016.0	0575 8148 ...	0575 8448 ...	0575 8248 ...	0575 8548 ...	0575 8348 ...	0575 8648 ...	
1117.5	FLEX 1117.5	0575 8148 ...	0575 8448 ...	0575 8248 ...	0575 8548 ...	0575 8348 ...	0575 8648 ...	
1219.2	FLEX 1219.2	0575 8148 ...	0575 8448 ...	0575 8248 ...	0575 8548 ...	0575 8348 ...	0575 8648 ...	

... = Ø without decimals in mm



**NORMACONNECT® FLEX E** an axial non-restraint coupling. It is used for connecting metal pipes, stainless pipes, as well as concrete and plastic pipes. This is a hollow trunnions version.

**Material**  
W2, W4, W5

**NORMACONNECT® FGR FLEX E**

Ø (O.D.)	Designation	Clamping ranges	PN <sup>1</sup> (MAWP <sup>1</sup> from Ø 180)	WP <sup>2</sup>	C max	Dimensions (approx.)			Weight (approx.)	Hex socket locking bolts	
		Odmin - Odmax			(mm)	a (mm)	d (mm)	H (mm)	(kg/pc.)	Thread	Tightening torque (Nm)
26.9	FLEX E 26.9	26.4-27.5	16	70	3	67	50	70	0.31	M 8 SW 6	5
28.0	FLEX E 28.0	27.5-28.5	16	70	3	67	50	70	0.31	M 8 SW 6	5
30.0	FLEX E 30.0	29.5-30.6	16	70	3	67	50	70	0.31	M 8 SW 6	5
33.7	FLEX E 33.7	33.0-34.3	16	60	3	67	55	75	0.32	M 8 SW 6	5
35.0	FLEX E 35.0	34.5-35.6	16	60	8	63	55	75	0.43	M 8 SW 6	5
38.0	FLEX E 38.0	37.5-38.6	16	60	8	63	60	80	0.43	M 8 SW 6	5
42.4	FLEX E 42.4	41.7-43.0	16	50	8	63	65	85	0.44	M 8 SW 6	5
44.5	FLEX E 44.5	44.0-45.1	16	50	8	63	65	85	0.45	M 8 SW 6	5
48.3	FLEX E 48.3	47.6-50.5	16	50	8	63	70	90	0.46	M 8 SW 6	5
54.0	FLEX E 54.0	53.3-54.6	16	50	17	78	75	95	0.60	M 8 SW 6	10
57.0	FLEX E 57.0	56.3-57.7	16	50	17	78	80	100	0.61	M 8 SW 6	10
60.3	FLEX E 60.3	59.5-61.0	16	40	17	78	85	105	0.62	M 8 SW 6	10
63.0	FLEX E 63.0	62.2-63.9	16	40	17	78	85	105	0.62	M 8 SW 6	10
70.0	FLEX E 70.0	69.0-71.0	16	40	25	98	90	110	1.16	M 8 SW 6	10
73.0	FLEX E 73.0	72.1-73.8	16	40	25	98	95	115	1.18	M 8 SW 6	10
76.1	FLEX E 76.1	75.2-77.0	16	35	25	98	100	120	1.18	M 8 SW 6	10
80.0	FLEX E 80.0	79.0-80.8	16	35	25	98	100	120	1.21	M 8 SW 6	10
84.0	FLEX E 84.0	83.0-85.0	16	35	25	98	105	125	1.24	M 8 SW 6	10
88.9	FLEX E 88.9	87.0-89.9	16	35	25	98	110	130	1.26	M 8 SW 6	10
101.6	FLEX E 101.6	100.4-102.8	16	35	25	98	125	145	1.39	M 8 SW 6	10
104.0	FLEX E 104.0	102.8-106.1	16	35	25	98	125	145	1.40	M 8 SW 6	10
108.0	FLEX E 108.0	106.8-109.2	16	35	25	98	130	150	1.42	M 8 SW 6	10
110.0	FLEX E 110.0	108.8-111.4	16	35	25	98	130	150	1.47	M 8 SW 6	10
114.3	FLEX E 114.3	113.0-115.5	16	35	25	98	135	155	1.47	M 8 SW 6	15
129.0	FLEX E 129.0	127.6-131.1	16	32	35	113	155	185	2.10	M 10 SW 8	20
133.0	FLEX E 133.0	131.5-134.4	16	32	35	113	160	190	2.13	M 10 SW 8	20
139.7	FLEX E 139.7	138.1-141.6	16	32	35	113	165	195	2.19	M 10 SW 8	25
141.3	FLEX E 141.3	139.6-142.8	16	32	35	113	170	200	2.19	M 10 SW 8	25
154.0	FLEX E 154.0	152.3-156.1	16	32	35	113	180	210	2.31	M 10 SW 8	30
159.0	FLEX E 159.0	157.3-160.7	16	32	35	113	185	215	2.38	M 10 SW 8	30
168.3	FLEX E 168.3	166.5 - 170.1	16	32	35	113	195	225	2.43	M 10 SW 8	30
180.0	FLEX E 180.0	178.0 - 182.0	13.5	30.0	35	139	210	240	4.0	M 12 SW 10	25
193.7	FLEX E 193.7	192.0 - 196.0	13.5	28.0	35	139	225	255	4.1	M 12 SW 10	25
206.0	FLEX E 206.0	202.0 - 208.0	13.5	26.5	35	139	240	270	4.3	M 12 SW 10	25
219.0	FLEX E 219.0	216.0 - 221.0	13.5	23.0	35	139	250	280	4.4	M 12 SW 10	25
225.0	FLEX E 225.0	222.0 - 227.0	12.0	23.0	35	139	255	285	4.5	M 12 SW 10	25
229.9	FLEX E 229.9	228.0 - 232.0	12.0	23.0	35	139	260	290	4.5	M 12 SW 10	25
244.5	FLEX E 244.5	242.0 - 247.0	12.0	22.0	35	139	275	305	4.7	M 12 SW 10	25
254.0	FLEX E 254.0	250.0 - 256.0	12.0	21.0	35	139	285	315	4.8	M 12 SW 10	25
267.0	FLEX E 267.0	264.0 - 269.0	12.0	20.0	35	139	300	330	5.0	M 12 SW 10	25
273.0	FLEX E 273.0	270.0 - 275.0	12.0	20.0	35	139	305	335	5.1	M 12 SW 10	25
306.0	FLEX E 306.0	302.0 - 308.0	9.0	17.5	35	139	340	370	5.5	M 12 SW 10	25
323.9	FLEX E 323.9	320.0 - 327.0	9.0	17.5	35	139	355	385	5.7	M 12 SW 10	25
326.0	FLEX E 326.0	322.0 - 329.0	9.0	16.5	35	139	360	390	5.7	M 12 SW 10	25
355.6	FLEX E 355.6	352.0 - 359.0	9.0	15.0	35	139	390	420	6.0	M 12 SW 10	25
406.4	FLEX E 406.4	402.0 - 410.0	7.5	14.0	35	139	440	470	6.7	M 12 SW 10	25
429.0	FLEX E 429.0	426.0 - 431.0	5.5	13.0	35	139	460	490	6.9	M 12 SW 10	40
442.0	FLEX E 442.0	439.0 - 444.0	5.5	13.0	35	139	475	505	7.1	M 12 SW 10	40
457.2	FLEX E 457.2	454.0 - 459.0	5.5	12.0	35	139	490	520	7.3	M 12 SW 10	40
508.0	FLEX E 508.0	505.0 - 510.0	5.5	11.0	35	139	540	570	7.9	M 12 SW 10	40
531.0	FLEX E 531.0	528.0 - 534.0	5.5	10.5	35	139	565	595	8.1	M 12 SW 10	40
558.8	FLEX E 558.8	556.0 - 562.0	5.5	10.0	35	139	590	620	8.5	M 12 SW 10	40
609.6	FLEX E 609.6	606.0 - 613.0	4.5	9.0	35	139	640	670	9.1	M 12 SW 10	40
634.0	FLEX E 634.0	631.0 - 637.0	4.5	8.0	35	139	665	695	9.4	M 12 SW 10	40
711.2	FLEX E 711.2	707.0 - 715.0	4.0	7.0	35	139	745	775	10.3	M 12 SW 10	40
762.0	FLEX E 762.0	758.0 - 766.0	3.2	7.0	35	139	795	885	10.9	M 12 SW 10	40
812.8	FLEX E 812.8	808.0 - 817.0	3.2	6.5	35	139	845	935	12.8	M 12 SW 10	40
914.4	FLEX E 914.4	909.0 - 919.0	2.0	5.5	35	139	945	1035	14.0	M 12 SW 10	45
1016.0	FLEX E 1016.0	1013.0 - 1019.0	2.0	5.0	35	139	1050	1140	15.2	M 12 SW 10	45
1117.5	FLEX E 1117.5	1114.0 - 1120.0	2.0	4.5	35	139	1150	1240	16.4	M 12 SW 10	50
1219.2	FLEX E 1219.2	1216.0 - 1222.0	2.0	4.0	35	139	1250	1340	17.7	M 12 SW 10	50

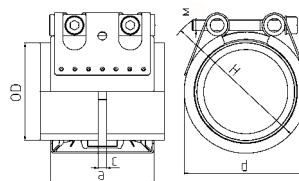
Coupling sizes >800 mm are in 2-parts design! Sizes > 1219.2 on request

PN<sup>1</sup> (Nominal Pressure) is the max. admissible working pressure in shipbuilding, based on a safety factor of ≥ 4.

MAWP<sup>1</sup> (Maximum Allowable Working Pressure) is the max. admissible working pressure in shipbuilding, based on a safety factor of ≥ 4.

WP<sup>2</sup> is the max. working pressure in industrial applications, with a safety factor as per NORMA specification.

## Technical data & Ordering information



NORMACONNECT® FGR FLEX E							
Ø (O.D.)	Designation	W2 Product No.		W4 Product No.		W5 Product No.	
		EPDM	NBR	EPDM	NBR	EPDM	NBR
26.9	FLEX E 26.9	0582 9100 026	0582 8400 026	0582 9200 026	0582 8500 026	0582 9300 026	0582 8600 026
28.0	FLEX E 28.0	0582 9100 028	0582 8400 028	0582 9200 028	0582 8500 028	0582 9300 028	0582 8600 028
30.0	FLEX E 30.0	0582 9100 030	0582 8400 030	0582 9200 030	0582 8500 030	0582 9300 030	0582 8600 030
33.7	FLEX E 33.7	0582 9100 033	0582 8400 033	0582 9200 033	0582 8500 033	0582 9300 033	0582 8600 033
35.0	FLEX E 35.0	0582 9100 035	0582 8400 035	0582 9200 035	0582 8500 035	0582 9300 035	0582 8600 035
38.0	FLEX E 38.0	0582 9100 038	0582 8400 038	0582 9200 038	0582 8500 038	0582 9300 038	0582 8600 038
42.4	FLEX E 42.4	0582 9100 042	0582 8400 042	0582 9200 042	0582 8500 042	0582 9300 042	0582 8600 042
44.5	FLEX E 44.5	0582 9100 044	0582 8400 044	0582 9200 044	0582 8500 044	0582 9300 044	0582 8600 044
48.3	FLEX E 48.3	0582 9100 048	0582 8400 048	0582 9200 048	0582 8500 048	0582 9300 048	0582 8600 048
54.0	FLEX E 54.0	0582 9100 054	0582 8400 054	0582 9200 054	0582 8500 054	0582 9300 054	0582 8600 054
57.0	FLEX E 57.0	0582 9100 057	0582 8400 057	0582 9200 057	0582 8500 057	0582 9300 057	0582 8600 057
60.3	FLEX E 60.3	0582 9100 060	0582 8400 060	0582 9200 060	0582 8500 060	0582 9300 060	0582 8600 060
63.0	FLEX E 63.0	0582 9100 063	0582 8400 063	0582 9200 063	0582 8500 063	0582 9300 063	0582 8600 063
70.0	FLEX E 70.0	0582 9100 070	0582 8400 070	0582 9200 070	0582 8500 070	0582 9300 070	0582 8600 070
73.0	FLEX E 73.0	0582 9100 073	0582 8400 073	0582 9200 073	0582 8500 073	0582 9300 073	0582 8600 073
76.1	FLEX E 76.1	0582 9100 076	0582 8400 076	0582 9200 076	0582 8500 076	0582 9300 076	0582 8600 076
80.0	FLEX E 80.0	0582 9100 080	0582 8400 080	0582 9200 080	0582 8500 080	0582 9300 080	0582 8600 080
84.0	FLEX E 84.0	0582 9100 084	0582 8400 084	0582 9200 084	0582 8500 084	0582 9300 084	0582 8600 084
88.9	FLEX E 88.9	0582 9100 088	0582 8400 088	0582 9200 088	0582 8500 088	0582 9300 088	0582 8600 088
101.6	FLEX E 101.6	0582 9100 101	0582 8400 101	0582 9200 101	0582 8500 101	0582 9300 101	0582 8600 101
104.0	FLEX E 104.0	0582 9100 104	0582 8400 104	0582 9200 104	0582 8500 104	0582 9300 104	0582 8600 104
108.0	FLEX E 108.0	0582 9100 108	0582 8400 108	0582 9200 108	0582 8500 108	0582 9300 108	0582 8600 108
110.0	FLEX E 110.0	0582 9100 110	0582 8400 110	0582 9200 110	0582 8500 110	0582 9300 110	0582 8600 110
114.3	FLEX E 114.3	0582 9100 114	0582 8400 114	0582 9200 114	0582 8500 114	0582 9300 114	0582 8600 114
129.0	FLEX E 129.0	0582 9100 129	0582 8400 129	0582 9200 129	0582 8500 129	0582 9300 129	0582 8600 129
133.0	FLEX E 133.0	0582 9100 133	0582 8400 133	0582 9200 133	0582 8500 133	0582 9300 133	0582 8600 133
139.7	FLEX E 139.7	0582 9100 139	0582 8400 139	0582 9200 139	0582 8500 139	0582 9300 139	0582 8600 139
141.3	FLEX E 141.3	0582 9100 141	0582 8400 141	0582 9200 141	0582 8500 141	0582 9300 141	0582 8600 141
154.0	FLEX E 154.0	0582 9100 154	0582 8400 154	0582 9200 154	0582 8500 154	0582 9300 154	0582 8600 154
159.0	FLEX E 159.0	0582 9100 159	0582 8400 159	0582 9200 159	0582 8500 159	0582 9300 159	0582 8600 159
168.3	FLEX E 168.3	0582 9100 168	0582 8400 168	0582 9200 168	0582 8500 168	0582 9300 168	0582 8600 168
180.0	FLEX E 180.0	0583 8120 ...	0583 8420 ...	0583 8220 ...	0583 8520 ...	0583 8320 ...	0583 8620 ...
193.7	FLEX E 193.7	0583 8120 ...	0583 8420 ...	0583 8220 ...	0583 8520 ...	0583 8320 ...	0583 8620 ...
206.0	FLEX E 206.0	0583 8120 ...	0583 8420 ...	0583 8220 ...	0583 8520 ...	0583 8320 ...	0583 8620 ...
219.0	FLEX E 219.0	0583 8120 ...	0583 8420 ...	0583 8220 ...	0583 8520 ...	0583 8320 ...	0583 8620 ...
225.0	FLEX E 225.0	0583 8120 ...	0583 8420 ...	0583 8220 ...	0583 8520 ...	0583 8320 ...	0583 8620 ...
229.9	FLEX E 229.9	0583 8120 ...	0583 8420 ...	0583 8220 ...	0583 8520 ...	0583 8320 ...	0583 8620 ...
244.5	FLEX E 244.5	0583 8120 ...	0583 8420 ...	0583 8220 ...	0583 8520 ...	0583 8320 ...	0583 8620 ...
254.0	FLEX E 254.0	0583 8120 ...	0583 8420 ...	0583 8220 ...	0583 8520 ...	0583 8320 ...	0583 8620 ...
267.0	FLEX E 267.0	0583 8120 ...	0583 8420 ...	0583 8220 ...	0583 8520 ...	0583 8320 ...	0583 8620 ...
273.0	FLEX E 273.0	0583 8120 ...	0583 8420 ...	0583 8220 ...	0583 8520 ...	0583 8320 ...	0583 8620 ...
306.0	FLEX E 306.0	0583 8120 ...	0583 8420 ...	0583 8220 ...	0583 8520 ...	0583 8320 ...	0583 8620 ...
323.9	FLEX E 323.9	0583 8120 ...	0583 8420 ...	0583 8220 ...	0583 8520 ...	0583 8320 ...	0583 8620 ...
326.0	FLEX E 326.0	0583 8120 ...	0583 8420 ...	0583 8220 ...	0583 8520 ...	0583 8320 ...	0583 8620 ...
355.6	FLEX E 355.6	0583 8120 ...	0583 8420 ...	0583 8220 ...	0583 8520 ...	0583 8320 ...	0583 8620 ...
406.4	FLEX E 406.4	0583 8120 ...	0583 8420 ...	0583 8220 ...	0583 8520 ...	0583 8320 ...	0583 8620 ...
429.0	FLEX E 429.0	0583 8120 ...	0583 8420 ...	0583 8220 ...	0583 8520 ...	0583 8320 ...	0583 8620 ...
442.0	FLEX E 442.0	0583 8120 ...	0583 8420 ...	0583 8220 ...	0583 8520 ...	0583 8320 ...	0583 8620 ...
457.2	FLEX E 457.2	0583 8120 ...	0583 8420 ...	0583 8220 ...	0583 8520 ...	0583 8320 ...	0583 8620 ...
508.0	FLEX E 508.0	0583 8120 ...	0583 8420 ...	0583 8220 ...	0583 8520 ...	0583 8320 ...	0583 8620 ...
531.0	FLEX E 531.0	0583 8120 ...	0583 8420 ...	0583 8220 ...	0583 8520 ...	0583 8320 ...	0583 8620 ...
558.8	FLEX E 558.8	0583 8120 ...	0583 8420 ...	0583 8220 ...	0583 8520 ...	0583 8320 ...	0583 8620 ...
609.6	FLEX E 609.6	0583 8120 ...	0583 8420 ...	0583 8220 ...	0583 8520 ...	0583 8320 ...	0583 8620 ...
634.0	FLEX E 634.0	0583 8120 ...	0583 8420 ...	0583 8220 ...	0583 8520 ...	0583 8320 ...	0583 8620 ...
711.2	FLEX E 711.2	0583 8120 ...	0583 8420 ...	0583 8220 ...	0583 8520 ...	0583 8320 ...	0583 8620 ...
762.0	FLEX E 762.0	0583 8120 ...	0583 8420 ...	0583 8220 ...	0583 8520 ...	0583 8320 ...	0583 8620 ...
812.8	FLEX E 812.8	0583 8128 ...	0583 8428 ...	0583 8228 ...	0583 8528 ...	0583 8328 ...	0583 8628 ...
914.4	FLEX E 914.4	0583 8128 ...	0583 8428 ...	0583 8228 ...	0583 8528 ...	0583 8328 ...	0583 8628 ...
1016.0	FLEX E 1016.0	0583 8128 ...	0583 8428 ...	0583 8228 ...	0583 8528 ...	0583 8328 ...	0583 8628 ...
1117.5	FLEX E 1117.5	0583 8128 ...	0583 8428 ...	0583 8228 ...	0583 8528 ...	0583 8328 ...	0583 8628 ...
1219.2	FLEX E 1219.2	0583 8128 ...	0583 8428 ...	0583 8228 ...	0583 8528 ...	0583 8328 ...	0583 8628 ...

... = Ø without decimals in mm